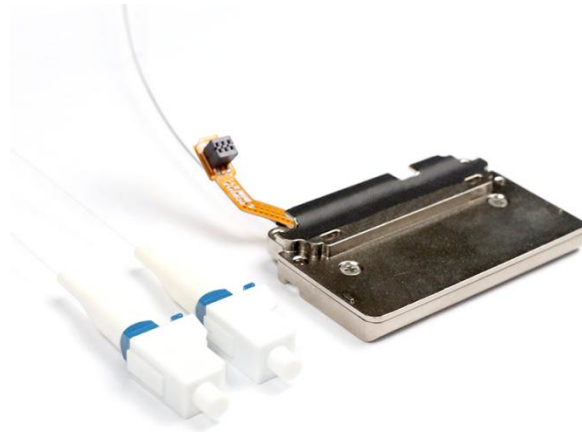


CFP2_EDFA Module



Beogold Technology CFP2_EDFA can be flexibly integrated into various DCO modules in CFP/CFP2/QSFP-DD/OSFP enclosures to meet various customization needs of customers. It can maximize space utilization, effectively compensate for the insertion loss of various optical devices in space- and power-limited DCOs or transponders, and work in the full C-band for single-wavelength optical power amplification.

Features

- Working wavelength: 1524.498~1572.063nm
- Working temperature: -5~75°C
- Large gain: 20dB
- Low power: <0.6W
- Extremely small size: 41.5*24*6.65mm

Applications

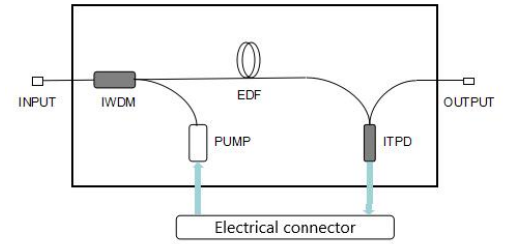
- Long distance fiber optic communication
- DCO Modules

Parameter	Unit	Min	Typ.	Max
Operating Wavelength Range	nm	1524.498	-	1572.063
Input optical power range	dBm	-22	-	-10
Output optical power range	dBm	-	0	5
Output signal power	dBm	-6	-	5
Gain range (Gain=Pout-Pin)	dB	-	20	-
NF@Pin=-15dBm, Pout=5dBm	dB	-	-	6
In-band OSNR @Pin=-15dBm, Pout=5dBm	dB/0.1nm	36	-	-
Polarization Related Gain	dB	-	-	0.5
Polarization mode dispersion	ps	-	-	0.5
Input/Output Return Loss	dB	40	-	-
Input Isolation	dB	20	-	-
Output PD splitting ratio	%	-	-	2

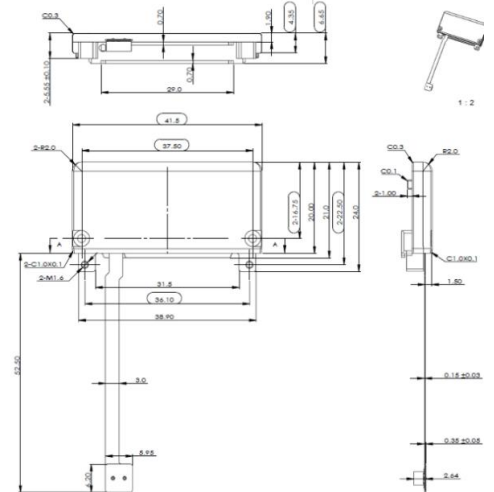
Parameter	Specification	Unit	Remarks	
Electrical	Power Supply	Pin definitions	-	
	Power Consumption	<0.6	W	At room Temperature
Mechanical Structure	Dimension	41.5x24x6.65	mm	Custom design
	Pigtail Fiber	SMF	-	-
Communication	Type	8pin Samtec CLP-104-02-L-D	-	-

Parameter	Min	Max	Unit
Working Temperature	-5	+75	°C
Storage Temperature	-40	+85	°C
Humidity	5	95	%

Optical Path



Mechanical Dimensions



For ordering information and custom solutions, please contact us: sales@beogold.com

Beogold Technology provides cost-effective optical modules and optical devices for fiber optic communication and fiber sensing system integrators. We provide customized optical total solutions to shorten customer development cycles and improve product reliability and consistency.

